

Chirange Incident Management System with Live GPS Tracking (for Android 3.0+ tablets)

"Utilising tablet technology to improve firefighter safety"

Profile ID of User Photo

Personal settings control

New Message Indicator

Select to view IM, photos and streaming video from users

New Alert Indicator

Select to view alerts, will also flash visible position on map

Operational Mode Display

Change incident mode, i.e. Defensive, offensive etc.

Incident Control/List

Create new incident or join an existing incident, view list

Users Control

Control incident personnel, add or assign people to incident

Groups Control

Create groups or assign personnel to groups

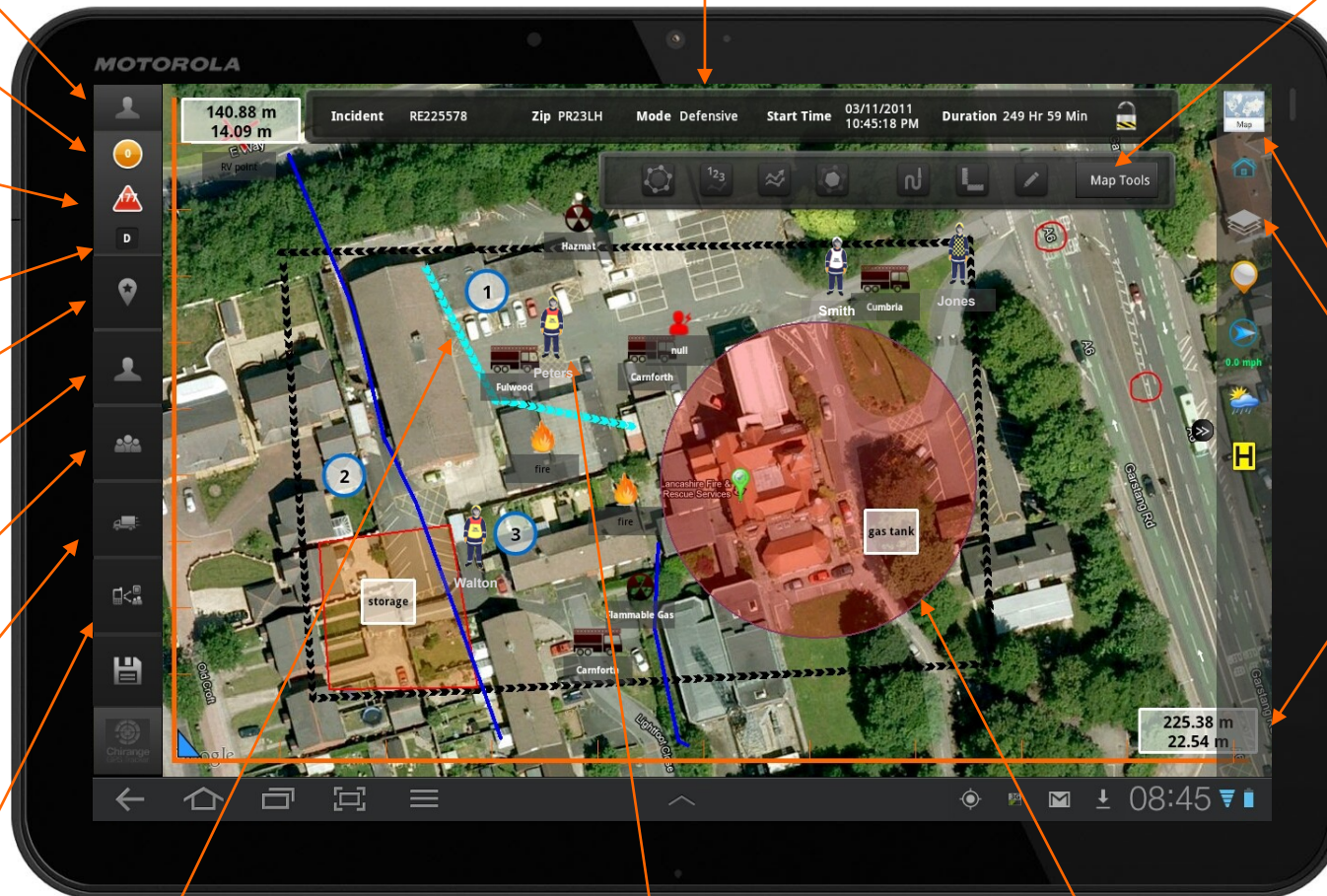
Assets Control

Manually select and place visual asset icons on screen

Device Deployment Control

Easily deploy any users with tracker devices who don't have auto login.

Top Incident Automated Information Display Bar



Motorola Xoom 10 inch Android Tablet

Map Control Tools

- Create Incident boundary
- Zone creation
- Sector creation tool
- Command Log notes
- Add Annotation tool
- On screen measuring tool, auto calculate area or building size or volume, point to point distances

Switch view control

Map, satellite, Street View

Layers display

- Group/Asset display on/off
- Wind direction
- Live weather feed
- Water hydrant locations

Screen Grid Measuring

Provides easy pinch and zoom measuring of the entire screen area vertical and horizontal in metric or imperial.

Sectors Positioning

manually place on map incident sectors, add lines or areas.

Personnel GPS tracking

Automatically view all personnel with GPS tracking devices, view name labels and see every commander at the incident

Zone Alerts

Any breach of a Zone rule by tracked personnel will automatically display an alert on screen



ANDROID



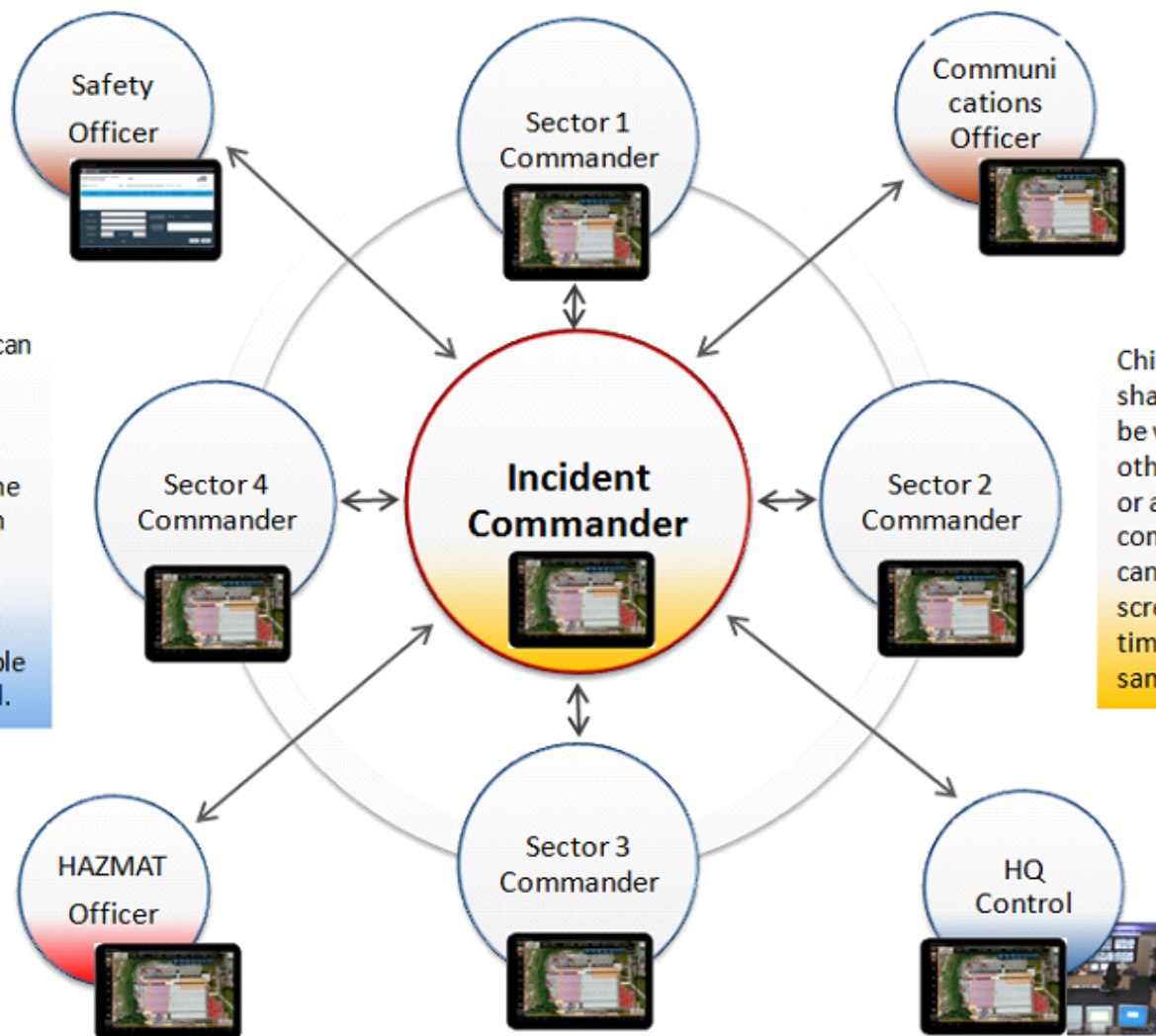
Chirange provides secure “real-time” enterprise visual communications and data sharing

Total mobility with 10 inch Android tablets.

Real-time on-screen tracking of GPS devices.

The Incident Commander can communicate visual information directly to all other commanders and senior officers attending the incident, the same location map view, tracking movements, zones and screen annotation are all shared information viewable to all authorised personnel.

See the same incident data but commanders can view their screens independently.



All data is safely stored in the cloud, not on the tablet.

No limit on number of tablets or GPS trackers used.

Chirange also provides for shared visual information to be viewed/shared with HQ, other service commanders or agencies. All authorised commanders at the incident can view, add or update on-screen information at any time so everyone sees the same data, instantly.

Create geo-fenced zones with automatic penetration alerts.

Should the Incident Commander create a danger zone area on the map, all commanders will instantly see it of their Chirange tablet screens, everyone can see where other commanders/officers are positioned, any commander can take and instantly send photos or even stream live video to the Incident Commander. Talk and give instructions over the radio but communicate visually using the Chirange Incident Commander.